



Alysia



Alysia, at 85.3 metres (280ft), is one of the world's largest yachts for charter. She has unquestionable presence with her sleek hull, at the same time towering but welcoming. Access is easy via passarelle or the wide, teak swimming platform and once on board, life unfolds over five spectacular decks. Thirty-six guests are looked after by thirty-four crew and there is room to entertain at the most lavish level. With 2,400 square meters (25,833 sq ft) of guest space, everyone can enjoy the Annaliese of their choice. And the choice is enormous. Arriving by lift 21 meters (70 ft) up from

sea, the Sun Deck provides privacy, intimacy and spectacular views over your domain. At one end, the heli-pad converts into a circular sunbathing terrace, at the other, is a Jacuzzi surrounded by sun beds. Crew at the large bar serve anything from a cold drink to a hot buffet – 24 hours a day. For sport, there are four waverunners, two tenders and a garage full of other leisure equipment including a fully equipped diving center. At night the Bridge Deck is transformed – dimmed lights overhead, candle lights on starched white table linen and dinner as only Alysia can provide.



Main Saloon

Guest Areas

Main Deck

The Main Deck provides one of the largest entertaining spaces of any private yacht. Aft, the teak sofas, seats and tables can be illuminated for drinks before or after dinner. Moving indoors, the raised platform rear saloon is ideal for a game of cards or a movie on the 51" screen with surround sound. In the main saloon, fibre optic-lit glass pillars emit soft hues of colour with silver leaf louvered windows separating the saloon and bar from the dining area. Mirrored ceilings, a grand piano, large sofas and groups of armchairs, silk curtains, Michelangelo marble columns and the hand made, raised pattern carpet all combine to provide the perfect atmosphere for casual entertaining – day or night. The main and dining saloons can also be rearranged, creating one enormous space suitable for hosting large parties or conferences.

Upper Deck

The Upper Deck saloon is like a private club. Two seating areas each with their own plasma screen, a backgammon and card table and a generously stocked bar make this the place to be after dinner. Alternatively stroll downstairs past the enormously spectacular panels of blue Brazilian Makauba marble and take in a movie in the main cinema – the library includes vintage and modern classics.

Dining.

Entertaining on a grand scale is effortless aboard Alysia. Outside, indoors or even using both locations at the same time, guests can sit, dine and relax with ease. The dining saloon seats thirty-six on large, comfortable chairs with hand made silk upholstery. The oak tables can be laid with individual place mats or table linen from a range of colours to suit every occasion. Lighting can change the mood at breakfast, lunch or dinner; curtains open and daylight fills the room, overhead lights dimmed, candles lit and the elegant room turns dinner into a banquet.



Upper Saloon



Main Saloon



Dining Saloon

The Owner's Stateroom

The Upper Deck owner's stateroom measures over 122 square metres (1313 square feet) : and comprises: the master stateroom with panoramic windows encompassing the full extent of the 180° front of the ship, with access to its private open deck; a sitting room with desk, IT equipment, furniture and a 42" flat screen plasma television; the master bathroom finished entirely in marble with elevated Jacuzzi tub, two vanity style basins, a large shower, super silent toilet and bidet, His and Hers walk in closets at the entrance to the bathroom and a California king-size bed. At the foot of the bed is a cabinet, containing a stereo, DVD and flat screen plasma television with a remote control mechanism to raise the set and lower it again into the cabinet and a double subsidiary cabin for the use of children or personal staff.

The Owner's Suite bathrooms are finished in Roso Aurora marble with borders, mirrored surfaces and a skylight. The vanity units are faced with marble and corian.



Master Stateroom



Master Study



Master Stateroom



VIP Guest Stateroom

VIP Guest Stateroom

The VIP suite is situated on the Bridge Deck and includes a separate television lounge and study with a double sofa bed. Another plasma screen faces the large super king-size bed. A spacious Michelangelo marble bathroom has separate shower, Jacuzzi bath and WC areas.



VIP Guest Stateroom



VIP Guest Bathroom

Guest Staterooms

Alysia's additional guest suites include eight super king-size doubles and seven twin staterooms, including one equipped for special needs. They are furnished to the highest standards with limed oak paneling, limestone architraves, silk embroidered counterpanes, sofas, a writing desk, tilting LCD screen television with DVD and large marble bathrooms.



Double Stateroom



Guest bathroom



Twin Stateroom

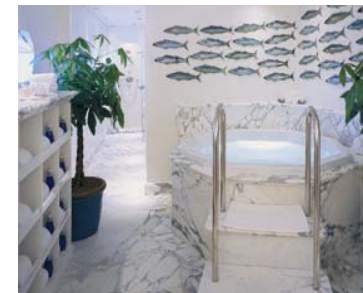
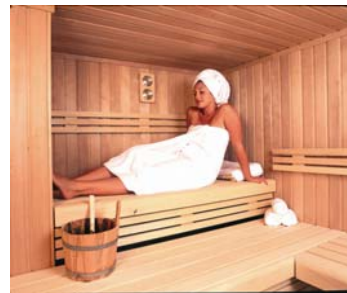


Relaxation Area

Lower Deck Health Centre

The Lower Deck health centre is designed for fitness as well as beauty. The tranquil epicenter is a large curved salon set around a marble Jacuzzi. Large slabs of cut-to-curve Azul Paraiso marble are set off by floor to ceiling back-lit glass panels that dissolve through spectrums of purple, blue and green. Recline on the beds and gaze at the aquarium, all under a star ceiling lit by fiber optics. Programs are designed to soothe and shape the body as well as relax the mind.

Apart from the well-equipped gymnasium, there is a salon for facial and body treatments, a massage room, hair and nail salon as well as separate male and female steam rooms, saunas, showers and Jacuzzi plunge pools. A second relaxation area provides calm, a trained beautician provides expertise. Guests can reach the health centre without meeting other guests or crew and whilst they enjoy their therapy, young children can be looked after in the supervised crèche.



FACIAL TREATMENTS

MASSAGE

BODY TREATMENTS

STEAM ROOM

SAUNA

HAIR SALON

NAIL SALON

JACUZZI

GYMNASIUM

CRECHE

Refresh your Senses

The yacht's amenities include a Swimming platform with hydraulically operated door on the transform that gives access to the water sports equipment, showers and changing rooms. On the Sun Deck there is a Jacuzzi and a raised platform seating area, barbecue and bar area. Also the vessel is fully equipped with the leisure equipment one would expect to find on board - including: two open speed boats for water skiing – diving equipment – wind surfers and four wave runners. So whether you are sailing in the Caribbean with palm fringed beaches or sophistication of Monte-Carlo or the unspoilt Aegean, life on-board the Alysia will truly refresh your senses.



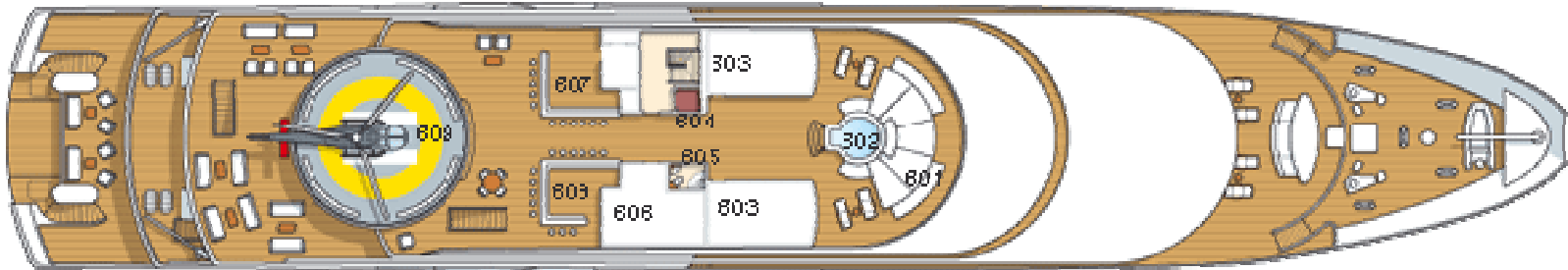


Security

No expense has been spared to equip the ship with the latest surveillance and security technology. Cameras and monitors are installed at the bow and stern of the vessel, the main mast, in the side passageway of the main deck, port and starboard, in the engine room and in the lazarette area in order to monitor the aft door leading to the swimming platform. Three monitoring stations are installed. An underwater surveillance system with indication of size/shape of approaching objects and alarm on the bridge are installed for the monitoring of objects that may approach the vessel underwater when she is not under way.

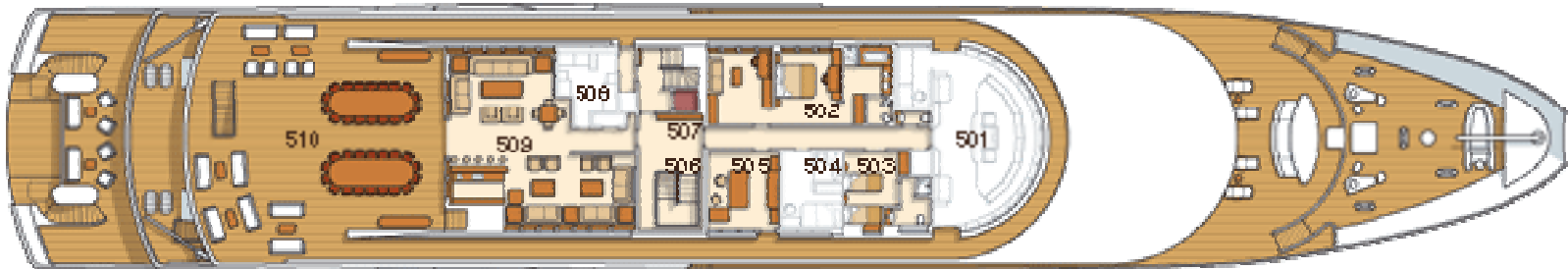
Pollution

Extreme efforts have been taken to build the ship in accordance with US "zero discharge" regulations related to oily water treatment, waste oil and sludge disposal, sewage treatment, galley waste and garbage treatment.



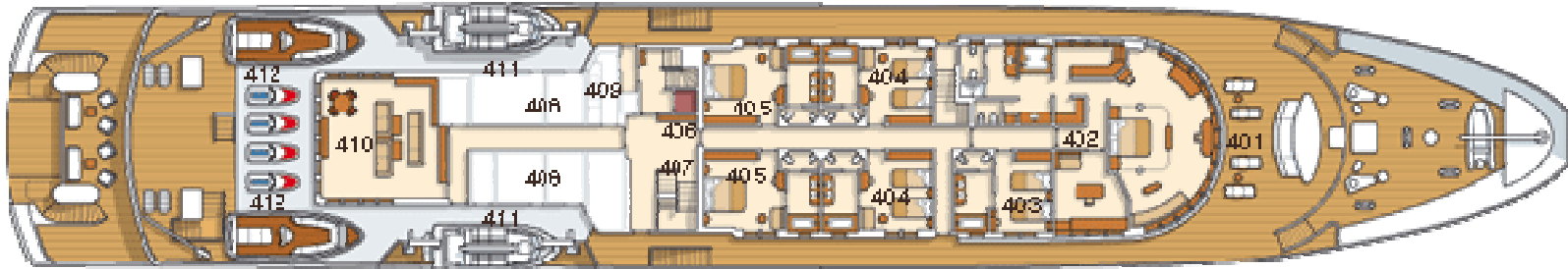
SUN DECK

- | | | | | |
|-------------|--------------------|---------------------|--------------------|-------------------------------------|
| 601 Sun bed | 603 Machine room | 605 Day shower room | 607 Barbeque / bar | 609 Helicopter deck/ sunbed terrace |
| 602 Jacuzzi | 604 Guest elevator | 606 Machine room | 608 Bar | |



BRIDGE DECK

- | | | | | |
|---------------|-----------------------------|---------------------|--------------------|-------------------------|
| 501 Bridge | 503 Special needs stateroom | 505 Business center | 507 Guest elevator | 509 Bridge deck saloon |
| 502 VIP suite | 504 Captain's stateroom | 506 Main staircase | 508 Pantry | 510 Outdoor dining area |



UPPER DECK

- | | | |
|---------------------------------|----------------------------|---------------------------|
| 401 Master suite private deck | 405 Double guest stateroom | 409 Pantry |
| 402 Master suite | 406 Guest elevator | 410 Cinema/ library |
| 403 Master suite twin stateroom | 407 Main staircase | 411 Lifeboat |
| 404 Twin guest stateroom | 408 Machine room | 412 Tender / wave runners |



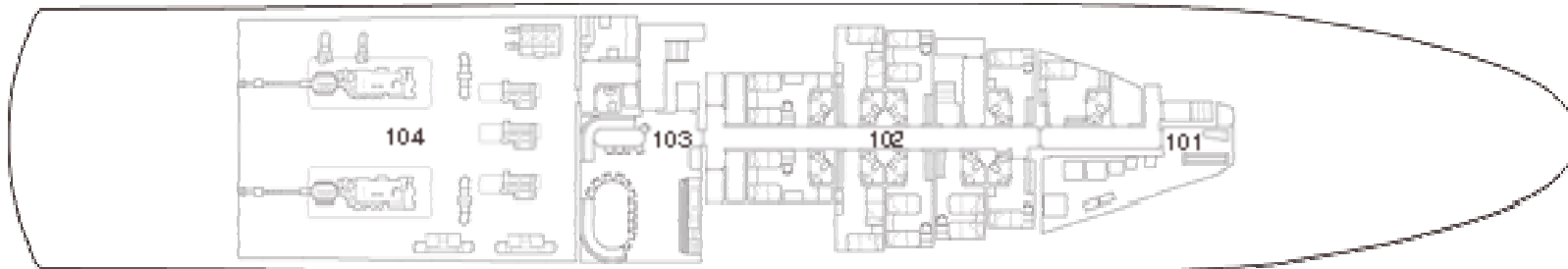
MAIN DECK

- | | | |
|----------------------------|--------------------|-------------------------|
| 301 Double guest stateroom | 304 Main staircase | 307 Dining saloon |
| 302 Twin guest stateroom | 305 Guest elevator | 308 Main saloon |
| 303 Entrance lobby | 306 Pantry | 309 Aft entrance saloon |



LOWER DECK

- | | | |
|-------------------------|----------------------------------|---------------------------------------|
| 201 Crew quarters | 207 Treatment room | 213 Female sauna and steam room |
| 202 Medical center | 208 Relaxation studio | 214 Guest elevator |
| 203 Gymnasium | 209 Main spa room/ Jacuzzi | 215 Garbage treatment |
| 204 Crèche | 210 Male Jacuzzi / health suite | 216 Main galley |
| 205 Hair and nail salon | 211 Male sauna and steam room | 217 Engine room |
| 206 Massage room | 212 Female Jacuzzi/ health suite | 218 Diving / leisure equipment garage |



TANK DECK

- | | | | |
|------------------|------------------------|---------------|-----------------|
| 101 Laundry room | 102 Crew accommodation | 103 Crew mess | 104 Engine room |
|------------------|------------------------|---------------|-----------------|

SPECIFICATION

Type:	Twin Screw Steel Passenger Vessel
Flag:	Malta
Length:	85.30m (280ft)
Beam:	14.44m (47ft 4in)
Draft:	4.15m (13ft 7in)
Gross weight:	2,990 tonnes
Net tonnage:	891 tonnes
Builder:	Neorion Shipyard, Greece
Year:	2005
Naval architect:	Alpha Marine, Greece
Exterior designer:	Alpha Marine and H. Poulias, Greece
Interior designer:	Alpha Marine and H. Poulias, Greece
Construction:	Steel hull and superstructure Aluminium deckhouses
Classification:	SOLAS Passenger Vessel, Det Norske Veritas, Class Notation 1 A1
Speed:	Maximum 18 knots Cruising 16 knots Economic 14 knots
Range:	7,000 nautical miles at 14 knots
Fuel capacity:	234,455 litres
Water capacity:	110,213 litres
Watermaking:	2 x TEMAK desalination plants producing 40,000 litres per day
Decks:	Teak decks throughout
MACHINERY	
Main engines:	2 x 2,750hp Caterpillar 3606
Propellers:	2 x KaMeWa variable pitch, 2 x KaMeWa Ulstein gearbox 480 AGHC
Generators:	3 x 500 kW Caterpillar 3412, 1 x Caterpillar 3406 auxiliary generator
Power rating:	Main / emergency power - 380V AC 3 phase 50 Hz Main / emergency lighting - 220V AC 3 phase 50Hz Guest appliances - 220/110V AC 60Hz
Air conditioning:	Heinen & Hopman and Carrier Guest area air is 100% external/fresh. Supply is filtered, pre-cooled and pre-dehumidified.
Stabilizers:	Fincantieri retractable type N.S.R.O. 0-26
Bowthruster:	KaMeWa Tunnel Thruster 1100-50 – 300 kW
Exhausts:	Vosper Thornycroft – custom built Exhausts can be arranged for exit above or sub sea.
Bilge separator:	Poiseidon SP. 2.5 Capacity 2.5 cubic metres per hour

COMMUNICATIONS, NAVIGATION AND SAFETY

Communications:	SatCom, cellular, VHF, UHF, SSB, digital PBX with ISDN compatibility providing 80 lines/5 Inmarsat connections.
Navigation:	GMDSS, VDR, AIS, Inmarsat C, Fleet 77 Fully automatic joystick operation, 2 x ectis, 2 x ARPA radars.
Safety:	2 x 7.74m 27 person Fassmer lifeboats with Saab Iveco NEF 370hp engine (30 knots service speed), 4 x 12 person life rafts.
Fire equipment:	Marioff Hi Fog system, smoke detectors all areas. All safety and fire equipment to SOLAS rules.
Galley & pantries:	Aluminox stainless steel galley, fridges and pantries to US Public Health Authority standards.
Elevators:	1 x 6 guest elevator connecting 5 decks. 1 x crew and trolley elevator connecting 5 decks.

ACCOMMODATION

Guests:	36 guests in 18 staterooms. 1 x double master suite, 1 x double VIP suite, 8 x double staterooms and 8 x twin staterooms, all with ensuite bathrooms.
Crew:	34 crew Crew accommodation is on the lower decks with self service restaurant and mess room.
Medical centre:	Medical centre with AED (Automated External Defibrillator), AMM (Advanced Maritime Medical kits), oxygen, airway and maritime splinting kits.
Business centre:	Office facility with 3 x Compaq laptops, 1 x Compaq desktop, all with Windows XP, 1 x colour/black and white printer, 1 x photocopier. Telephone lines and broadband lines in port or via satcom. Direct dial Satcom and fax.



LEISURE AND ENTERTAINMENT

Sun deck:	Bar, barbecue and 8-person Jacuzzi.
Bridge deck:	Saloon with bar, two seating areas both with 42" plasma televisions, DVD and CD players. Chess board, card table and board games. Meeting room facilities with Compaq laptop computer, internet and fax connection, HP colour and b/w laser printer.
Upper deck:	Library / cinema with 100" screen, overhead projection and surround sound system.
Main deck:	Saloon and dining room with bar, Yamaha grand piano, 51" Sony Wega plasma television, surround sound, DVD and CD players.
Lower deck:	Health centre with main indoor Jacuzzi, separate male and female studios with sauna, steam room, shower, WC and changing rooms. Post treatment relaxation area. Hair/nail salon, massage room, treatment room and two fully qualified beauty therapists. Children's play area/crèche. Gym with treadmill, multigym, bicycles, step and free weights.
Watersports:	2 x 7.8m Special Craft tenders with Volvo 230hp inboard KAD43, 1 x 3.8m RIB with 35hp outboard, 4 x Yamaha XL 700hp Waverunners, Laser sailing dinghy, water-skis, kyaks, windsurfers, inflatables and tows, fishing tackle, PADI certified scuba diving equipment including 15 x adult and 3 x children's diving suits, 5 x diving computers, 3 x waterproof cameras, 2 x scuba scooters. (Diving Centre supported by 2 x PC-Interface-Memo Mouse-Data track Windows and 2 x air compressors.)
Helicopter deck:	Fully equipped, 9m Heli-Deck certified to 4.9 tons.

SECURITY EQUIPMENT

CCTV:	Cameras at the bow, main mast, side passageways of main deck, engine room, swimming platform.
Monitors:	Monitoring stations in the bridge, crew mess and master suite with 24 hour monitoring in the bridge.
Alarms:	Security alarm systems throughout the yacht. Underwater surveillance and detection system monitored 24 hours a day.
Safes:	The yacht has a main central safe and each stateroom is fitted with a digital safe.
ISPS code:	This vessel complies to the July 2004 ISPS code.

This brochure does not constitute an offer for the sale of or an invitation to purchase or charter the vessel. The brochure has been prepared with due care and is believed to be correct. However no error or misstatement in or omission from this brochure shall entitle any hirer or charterer to terminate or cancel any agreement for the hire or charter of the vessel or to any reduction in or repayment of any charter or hire fees paid or payable pursuant to such agreement.

Brochure designed and produced by Steven Taylor and Associates.

SUMMARY

85.3 metre (280ft) Alysia is one of the world's most impressive charter yachts. Built to SOLAS safety specifications, she has a steel hull and superstructure with aluminium deckhouses.

CAPACITY AND RANGE

The ship is equipped to carry up to 36 passengers with 34 crew.

With a range of over 7,000 nautical miles, Alysia is capable of crossing the Atlantic, navigating the Panama Canal and reaching the west coast of the United States and Mexico.

CREW

Captain	Chief Officer
Second Officer	Third Officer
Chief Engineer	Second Engineer
Third Engineer	2 x Engineers
Bosun	6 x Deck Hands
Chief Steward/Stewardess	8 x Stewards/Stewardesses
Chef de Cuisine	Two Assistant Chefs
Galley Assistant	Nurse
Beauty Therapist	Masseuse
2 x Laundry Staff	

MASTER SUITE

The 122 sq m (1,313 sq ft) Upper Deck master suite includes the owner's stateroom with superior California king-size bed, 180° panoramic windows with remote controlled curtain and access to a private deck. Facing the bed is a retractable 42" plasma television/DVD with Creston control console.

The master bathroom is finished entirely in pure white Afion marble with a double Jacuzzi bath, two basins, two separate WCs and bidets, a separate shower and two walk-in closets.

The suite also has a subsidiary twin stateroom 23 sq m (248 sq ft) with en-suite bathroom for children or personal staff and a fully equipped study.



VIP STATEROOM

The 45 sq m (484 sq ft) VIP stateroom is on the Bridge Deck and includes a sitting room with a 42" plasma television and a large sofa that converts into a double bed. The superior king-size bed faces a flat screen plasma television. There is also a separate plasma television in the sitting room. The bathroom is finished in Michelangelo marble with a Jacuzzi bath, twin basins, large shower room and separate WC and bidet.

GUEST STATEROOMS

Additionally there are 10 guest staterooms on the Main Deck, 6 x 34 sq m (366 sq ft) doubles and 4 x 29 sq m (312 sq ft) twins and 4 on the Upper Deck, 2 x 27 sq m (291 sq ft) doubles and 2 x 29 sq m (312 sq ft) twins. There is one special needs twin stateroom 18 sq m (194 sq ft) on the Bridge Deck with 90cm doors and a fully equipped en-suite shower room.

Each guest stateroom is a mini suite with super king-size bed (or large singles), tilting flat screen LCD linked to satellite TV, DVD, CD and radio, writing desk with direct dial telephone links and internet/email connection. All staterooms have hand made carpets, silk curtains, a sofa, walk in closets and large bathroom with bath, shower and separate WC, bidet and twin basins. Bathrooms are finished in large pieces of Michelangelo marble with each basin made out of a single slab.

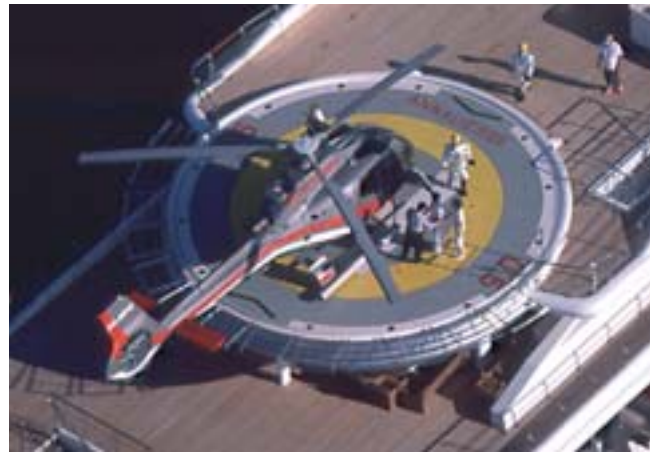
All staterooms have sophisticated lighting systems with individual controls in both bedroom and bathroom. The 5 menu system allows different levels and locations from full to nighttime lighting. Additionally the door between the bed and bathroom is illuminated by a fibre optic light that moves through different light spectrums.

ADDITIONAL GUEST AREA INFORMATION

There is a specially-built crèche with climbing frame, slide, games and toys.

The ship has pantries at all levels as well as a service lift for the crew, connecting 5 decks. A separate guest lift for 6 guests runs from the Lower Deck up to the Sun Deck.

The main staircase connects the Lower Deck up to the Bridge Deck.



Each landing is furnished with 4 x 1.3 metre symmetrical slabs of blue Makauba Brazilian marble.

Indoors or outside, all 36 guests can be seated for dinner at one time.

BUSINESS FACILITIES

The business centre is located on the Bridge Deck with an internal LAN for connecting computers and peripheral devices. The digital PBX telephone system is equipped with the latest ISDN software, 80 lines including five satellite connections linked via an Inmarsat Ship to Earth station.

HEALTH AND FITNESS

The Lower Deck Health Centre is divided into 5 areas: main Jacuzzi room, a post treatment/relaxation room, identical segregated areas for men and women including sauna, steam room, cold plunge pool, Jacuzzi and shower. A further area includes a beauty salon, facial/body treatments and massage room. The entire centre is run by 2 fully qualified beauty therapists.

Also on the Lower Deck is a gymnasium with multigym, treadmill, rowing and cycling machines, free weights and television/DVD player.

AMENITIES

The wine cellar is equipped with temperature and humidity controlled shelves for correct storage of over 500 vintage wines. The ship operates a 24 hour laundry service. Indoors and on deck, there are Bose surround sound music systems throughout the yacht.

MEDICAL

A nurse is on call 24 hours a day. Our twin bed medical suite is equipped with AED and comprehensive first aid supplies.

POLLUTION

Extreme efforts have been taken to build the ship in accordance with US zero discharge regulations related to oily water treatment, waste oil, sludge disposal, sewage treatment, galley waste and garbage treatment.

